

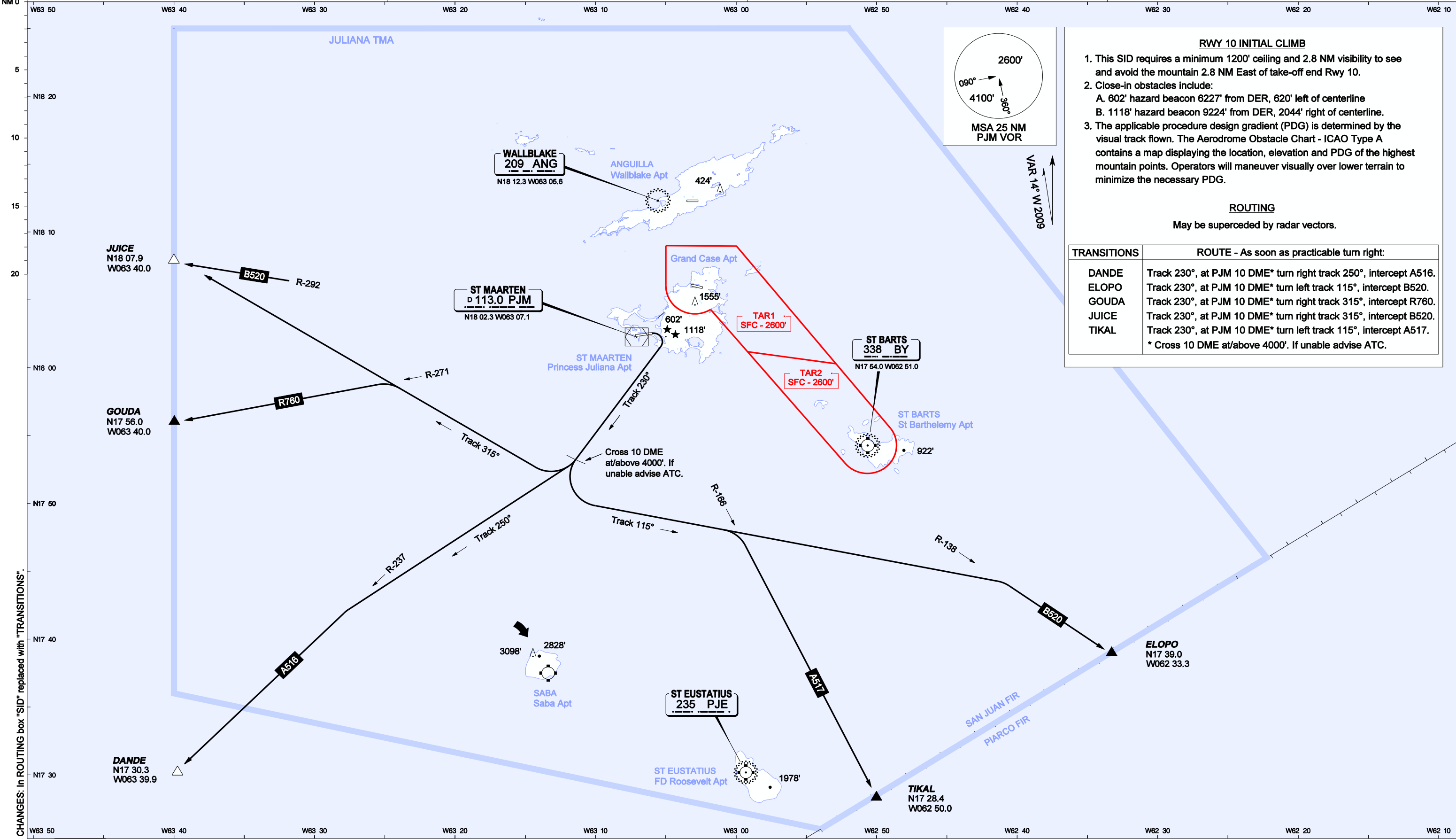
AIP DUTCH CARIBBEAN

SID - ICAO (RADAR REQUIRED)  
MULLET TWO DEPARTURE (MULLT2)

AERODROME ELEVATION: 14'  
TRANSITION LEVEL: FL65  
TRANSITION ALTITUDE: 5000'

JULIANA APPROACH: 128.95 (PRIMARY), 118.7  
JULIANA TOWER: 118.7

PRINCESS JULIANA INT'L (TNCM)  
PHILIPSBURG, ST MAARTEN



VAR 14° W 2009

**RWY 10 INITIAL CLIMB**

- This SID requires a minimum 1200' ceiling and 2.8 NM visibility to see and avoid the mountain 2.8 NM East of take-off end Rwy 10.
- Close-in obstacles include:
  - A. 602' hazard beacon 6227' from DER, 620' left of centerline
  - B. 1118' hazard beacon 9224' from DER, 2044' right of centerline.
- The applicable procedure design gradient (PDG) is determined by the visual track flown. The Aerodrome Obstacle Chart - ICAO Type A contains a map displaying the location, elevation and PDG of the highest mountain points. Operators will maneuver visually over lower terrain to minimize the necessary PDG.

**ROUTING**  
May be superseded by radar vectors.

| TRANSITIONS | ROUTE - As soon as practicable turn right:                        |
|-------------|---|
| DANDE       | Track 230°, at PJM 10 DME* turn right track 250°, intercept A516. |
| ELOPO       | Track 230°, at PJM 10 DME* turn left track 115°, intercept B520.  |
| GOUDA       | Track 230°, at PJM 10 DME* turn right track 315°, intercept R760. |
| JUICE       | Track 230°, at PJM 10 DME* turn right track 315°, intercept B520. |
| TIKAL       | Track 230°, at PJM 10 DME* turn left track 115°, intercept A517.  |

\* Cross 10 DME at/above 4000'. If unable advise ATC.

CHANGES: In ROUTING box "SID" replaced with "TRANSITIONS".